



## MKARNS Tonnage

2022 tonnage on the entire McClellan-Kerr Arkansas River Navigation System totaled 11 million tons, with a value of \$3.1 billion.

### Iron/Steel

1,139,464 tons (10.35%) / \$278,621,737.28 (9.20%)

### Chemical Fertilizer

2,066,518 tons (18.77%) / \$288,237,930.64 (9.50%)

### Other Chemicals

371,622 tons (3.37%) / \$404,038,587.06 (13.30%)

### Petroleum Products

115,600 tons (1.05%) / \$55,543,488.00 (1.80%)

### Sand/Gravel/Rock

3,962,874 tons (35.99%) / \$433,617,673.08 (14.20%)

### Coal/Coke

427,866 tons (3.89%) / \$1,085,470,817.34 (14.20%)

### Minerals/Building Materials

687,768 tons (6.16%) / \$122,629,034.40 (4.00%)

### Wheat

951,158 tons (8.64%) / \$245,275,113.46 (8.10%)

### Soybeans

842,536 tons (7.65%) / \$399,640.10 (0.01%)

### Food/Farm Products

440,332 tons (3.99%) / \$46,151,196.92 (1.50%)

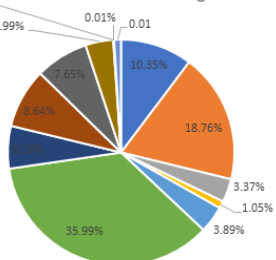
### Equipment/Machinery

14,124 tons (0.13%) / \$82,978,500 (2.70%)

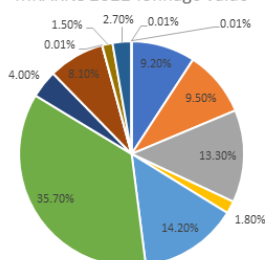
### Miscellaneous

850 tons (0.01%) / \$241,935.50 (0.01%)

MKARNS 2022 Tonnage



MKARNS 2022 Tonnage Value



## Mississippi River Tonnage

2022 tonnage on the Mississippi River totaled 1.5 million tons, with a value of \$258 million.

### Iron/Steel

17,814 tons (1.21%) / \$4,355,879.28 (1.76%)

### Chemical Fertilizer

315,334 tons (21.37%) / \$43,984,181.12 (17.74%)

### Sand/Gravel/Rock

50,000 tons (3.39%) / \$5,471,000 (2.21%)

### Minerals/Building Materials

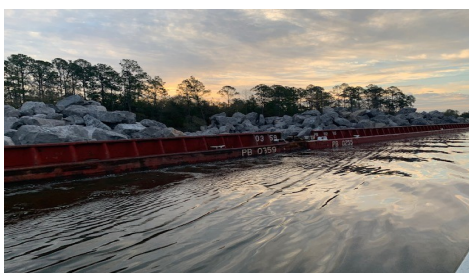
77,535 tons (5.25%) / \$13,824,490.50 (5.58%)

### Soybeans

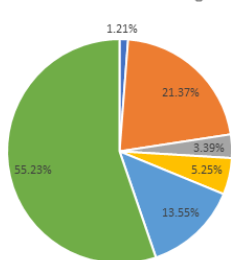
200,000 tons (13.55%) / \$94,866,000 (38.26%)

### Food/Farm Products

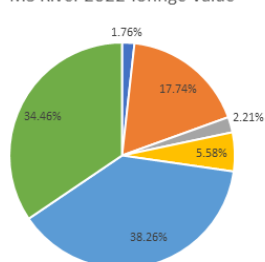
815,123.80 tons (55.23%) / \$85,433,125.48 (34.46%)



MS River 2022 Tonnage



MS River 2022 Tonnage Value



## Arkansas Waterways Commission

1 Commerce Way  
Suite 503  
Little Rock, AR 72206

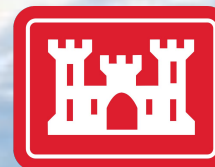


501.682.3163  
Waterways@Arkansas.Gov  
Waterways.Arkansas.Gov

# 2023 Inland Waterways Fact sheet

## NAVIGATION CHARTS

To purchase or download navigation charts for the McClellan-Kerr Arkansas River Navigation System, please access the following USACE websites:



Little Rock District: [www.swl.usace.army.mil/](http://www.swl.usace.army.mil/)  
Memphis District: [www.mum.usace.army.mil/](http://www.mum.usace.army.mil/)  
Vicksburg District: [www.mvk.usace.army.mil/](http://www.mvk.usace.army.mil/)  
Other Districts: [www.usace.army.mil/](http://www.usace.army.mil/)

## Profiles of Ports & Terminals on the MKARNS

For a detailed description of ports & terminals on the MKARNS, please access the website of the Arkansas Waterways Commission website.



Scan this QR code with your phone to jump to our website!

## Arkansas Waterways Commission

1 Commerce Way, Suite 503  
Little Rock, AR 72202

PH: 501-682-3163

501-682-2322

Waterways@Arkansas.Gov

[waterways.arkansas.gov](http://waterways.arkansas.gov)



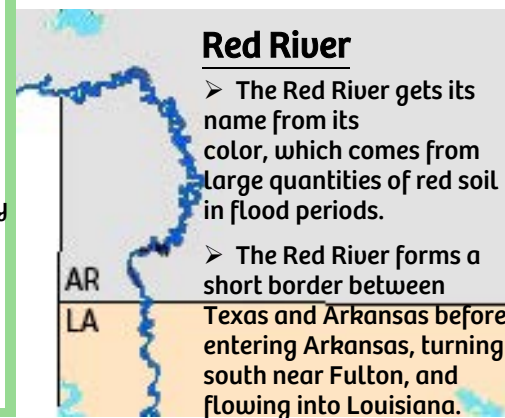
# The Navigable Rivers of Arkansas

## Mississippi River



- The Mississippi River forms the 320 mile eastern border of the state. This mighty river is the main trade corridor for goods produced in the northern part of the U.S. traveling to gateway ports near the Gulf of Mexico.
- Arkansas ranks 1st in the nation in rice production, harvesting more than 1.6 million acres annually.
- The Mississippi River provides Arkansan families with an efficient, low-cost option to export their crops to foreign markets.
- State of the art steel mills along the Arkansas stretch of the Mississippi River are moving millions of tons of steel by barge each year.

## Red River



- The Red River gets its name from its color, which comes from large quantities of red soil in flood periods.
- The Red River forms a short border between Texas and Arkansas before entering Arkansas, turning south near Fulton, and flowing into Louisiana.

## White River

- The navigable portion of the White River flows North from Northwest Arkansas into Missouri before turning to flow generally Southeast to the Arkansas River near the Mississippi River.
- The final 10 miles of The White River serves as a segment of the MKARNS, connecting the Arkansas River to the Mississippi River.



## Ouachita River

- The Ouachita River has a 9-foot-deep navigation channel to Camden, Arkansas, a distance of 117 miles upstream of the Louisiana state line.
- Ouachita is the French spelling of a Native American word meaning "good hunting ground."

### Ouachita River Public Ports:

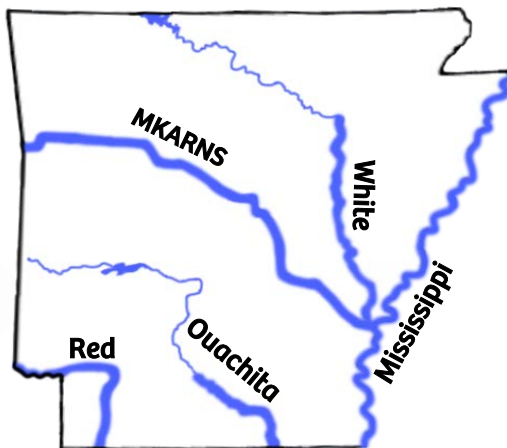
- City of Camden Port Authority
- Crossett Port Authority

### Mississippi River Public Ports:

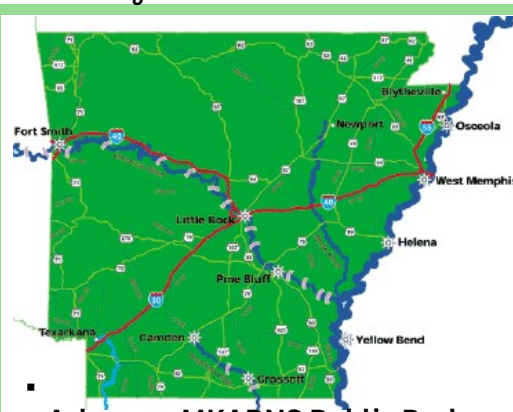
- Chicot-Desha Metropolitan Port Authority
- Helena-West Helena/Phillips County Port Authority
- West Memphis-Crittenden County Port Authority
- Osceola Port Authority

### White River Public Ports:

- White River Regional Port Authority in Newport, Arkansas



- Arkansas is 3rd in the nation in the number of inland waterways miles.
- The MKARNS, White, Mississippi, Ouachita, and Red Rivers make up 1800 miles of navigable rivers.
- There are four designated Foreign Trade Zones on the MKARNS at the Ports of Pine Bluff, Little Rock, Muskogee, and Catoosa. 42 countries have traded commerce with the Arkansas River Basin Region via the MKARNS.
- A total of 11 million tons of commercial goods were shipped in and out of Arkansas via our navigable waterways in 2022.
- Four of our navigable rivers are in the Arkansas-White-Red-Ouachita River Basin, but the Mississippi River cuts a path down the country all on its own.



### Arkansas MKARNS Public Ports:

- Port of Fort Smith
- Port of Little Rock
- Pine Bluff-Jefferson County Port Authority

## MKARNS



➤ The MKARNS is 445 miles long, 308 of which are in the State of Arkansas. The System has an elevation differential of 420 feet from its beginning at mile 600 on the Mississippi River to the head of navigation near Tulsa.

➤ There are 18 locks and dams on the MKARNS system – 13 in Arkansas and 5 in Oklahoma. Each lock chamber is 110 feet wide by 600 feet long and can handle 8 barges and a towboat.



➤ The MKARNS serves a 12-state region due to Tulsa Port of Catoosa being the most westerly inland river port that is ice-free year-round. These states include AR, OK, KS, TX, CO, MO, NE, NM, ND, MT, and ID.

➤ The Marine Highway M40 was upgraded from a "Connector" to a "Corridor" in 2015. Oklahoma and Arkansas were the first states to utilize Marine Highway signage recognizing the MKARNS as part of the overall freight network in both states.

➤ This system was dedicated by President Richard Nixon on June 5, 1971, and just celebrated its 50th Anniversary in 2021.

